

HBHS1

Applications

The HARRIS Patriot Slimline provides a sleek new construction or retrofit solution over other entry level LED fixtures, linear fluorescent, or traditional HID systems. The low profile design offers energy savings, low maintenance, and modular plug'n'play control options for high and low bay settings in industrial, commercial, and retail applications.



Features

- Lightweight aluminum body allows for optimal thermal management and ease of handling during installation
- 4' narrow I-frame design
- Open design with optional acrylic frosted lens available to reduce glare and enhance low bay applications
- Rigid and suspended mounting options available [compatible with most legacy Orion hanging methods]
- Optional aisle illumination performance package: 95% reflectance polished aluminum
- Emergency fixture identifier option available. Ends painted OSHA orange for easy identification from the floor. Can be used on fixtures with battery backup and fixtures connected to an emergency circuit
- Fixture wireguard option available
- End mounted sensors available [see accessories table]

Fixture Certification & Listings

- UL/cUL Listed for damp locations
- Buy American Act Compliant
- DesignLights Consortium™ Premium qualified luminaire
- DesignLights Consortium™ Standard qualified luminaire
- Visit the [DLC QPL](#) for listed models

Electrical

- Available in 120v-277v, 347v and 480v
- Full Dimming (0-10v) and Non Dimming fixtures are available

Ambient Operating Range

See ambient operating table on performance page

Rated Life

100,000 hours L70

Warranty

Orion HARRIS class LED fixtures are covered by a five-year limited warranty. Accessories and individual components are covered by separate OEM supplier warranties

Ordering Information Example (NOTE: No dashes or spaces unless noted below)

Series	Nominal Lumen Code	Application	Voltage	Driver Type	CRI; Color Temp	Lens Options	Power Connection	Fixture Options	Packaging Options
HBHS1	A1	OA	UNV	NDXX	850	NOL	HW	BB	-SP

Ordering Information

Series	Nominal Lumen Code ¹	Application	Voltage	Driver Type ²	CRI; Color Temp	Lens Options	Power Connection	Fixture Options	Packaging Options
HBHS1 = HARRIS LED High Bay, Patriot Slimline, Gen 1	A1 = 12,000lm B1 = 15,000lm C1 = 19,000lm	OA = Open Area AA = Aisle Area	UNV = 120v-277v 347 = 347v 480 = 480v	FDXX = Full Dimming 0-10v NDXX = Non-Dimming	840 = 80CRI; 4000K 850 = 80CRI; 5000K	NOL = No Lens LFA = Lens, Frosted Acrylic (with End Caps) Note: Wireguard Available (see accessories table)	PF = Platform ⁷ HW = Hardwire ¹⁰ ML = Mate N Lock ^{3,10}	[Blank] = No option BB = Battery Back Up ⁴ OE = Orange Emergency (Painted Ends) BE = Battery Back Up with Orange Emergency (Painted Ends) ⁴ EC = End Caps (lens not included) Note: End Mounted Sensors Available (see accessories table)	[Blank] = Bulk Pack -SP = Single Pack

Performance Information, Open Area No Lens ⁵

Series	Nominal Lumen Code	Actual Lumens	Lumens per Watt	Input Voltage	Input Power	Input Current	Power Factor	CCT	CRI
HBHS1	A1	12,640	138	277v	90w	0.32 A	>.90	5000K	≥80
HBHS1	B1	14,510	140	277v	104w	0.38 A	>.90	5000K	≥80
HBHS1	C1	19,120	141	277v	134w	0.48 A	>.90	5000K	≥80

Physical Information

Length	Width	Depth	Weight ⁶
47.28"	6.50"	2.84"	4-13 lbs.

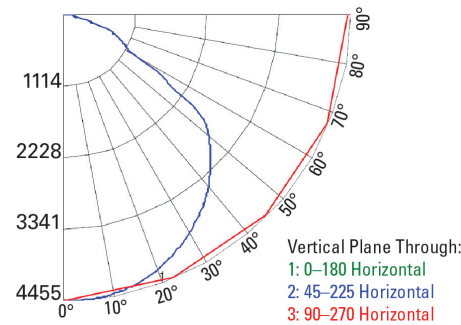
Ambient Operating Temperatures⁴

Nominal Lumen Code	Standard Range
A1	-20°C to 50°C [-4°F to 122°F]
B1	-20°C to 50°C [-4°F to 122°F]
C1	-20°C to 50°C [-4°F to 122°F]

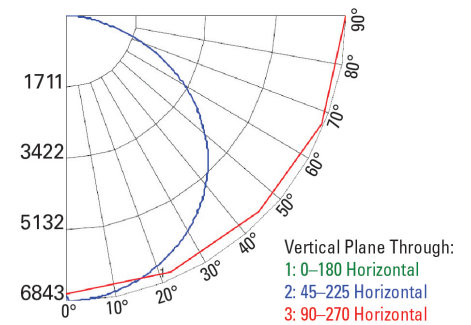
Photometrics

Visit orionlighting.com to obtain all .IES files

A1 OA NOL 5000K



C1 OA NOL 5000K



Accessories (Field Installed)

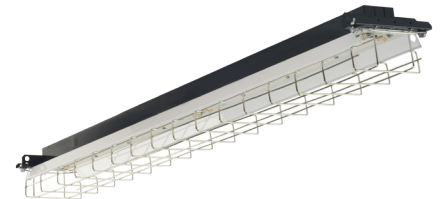
End Mounted Sensor Options ⁹	
OEMS1300P-DG ³	End Mounted On/Off Only Sensor, 120v-277v, normal temp/dry, high bay, low bay & aisle lenses, 4-Pin Platform Input, 4-Pin Platform Output, Dark Gray
OEMS1330P-DG ³	End Mounted On/Off Only Sensor, 120v-277v, cold temp/damp, high bay, low bay & aisle lenses, 4-Pin Platform Input, 4-Pin Output, Dark Gray
OEMS1370P-DG ³	End Mounted On/Off Only Sensor, 480v, normal temp/dry, high bay, low bay & aisle lenses, 5-Pin Platform Input, 5-Pin Platform Output, Dark Gray
OEMS1360P-DG ⁹	End Mounted Programmable On/Dim/Off & Ambient Sensor, 120v-277v, cold & normal temp, 20'-40' lens, 4-Pin Platform Input, 5-Pin Platform Output, Dark Gray (requires FSIR-100 Remote Configuration Tool - not included)
OEMS1368P-DG ⁹	End Mounted Programmable On/Dim/Off & Ambient Sensor, 347v/480v, cold & normal temp, 20'-40' lens, 5-Pin Platform Input, 5-Pin Platform Output, Dark Gray (requires FSIR-100 Remote Configuration Tool - not included)
FSIR-100	Remote configuration tool required for adjusting default factory settings, including Hi/Low/Off Modes and sensitivity/ time delay/cut off (ordered separately)
For more information on our OEMS1 style sensors, or additional sensor options, click here for Dimming Sensors and click here for Non-Dimming Sensors.	
Suspended Mounting Options	
ECAB19	19" cables with snap hooks (2 required per fixture)
ECAB31	31" cables with snap hooks (2 required per fixture)
HW-FC008	Hanging cable, set: adjustable 180", Loop, Y-Fit with snap hooks max length with snap hooks
HW-FC020-SH	Hanging cable set: adjustable 120", loop, Y-fit with (2) loops, (2) snap hooks included (not attached)
OESH101BRA	Eyebolt mounting bracket kit, requires two secondary hangers longer than 30"
OESH108RA	Pendant mounting bracket kit, requires two secondary hangers longer than 30"
Rigid Mounting Options	
H126SET-DG	Rigid/Flush and threaded rod mounting bracket set, dark gray
FMC-M-KIT-DG ¹¹	Rigid/Flush and threaded rod mounting bracket set, dark gray
OESH200-DG ¹¹	Adjustable length and adjustable angle rigid mount bracket set, dark gray
PMRMCM-3/4-EW-DG	Rigid pendant mounting bracket for open style fixtures, dark gray
Additional Fixture Accessories	
LED-HBHS-EC01-KIT	End Cap Kit for HBHS1 Series, [lens not included]
LED-HBHS-LF01-KIT	Frosted Acrylic Lens Kit for HBHS1 Series (end caps included)
LED-HBHS-AA01-KIT	Aisle Application Relector Kit for HBHS1 Series
LED-HBHS-WG01-KIT	Wireguard Kit for fixture, bulk packaging
LED-HBHS-WG01-KIT-SP	Wireguard Kit for fixture, single pack
OESC Sensor Adapter	
LED-HBHS-SB01-KIT-DG	HBHS1 Sensor Adapter Bracket for use with OESC style (i.e. OESC300P) controls only, dark gray (to be used when re-using existing OESC style sensors)



End Mounted Dimming Sensor- OEMS1360P-DG
Also shown, Sensor Configuration Tool - FSIR-100



End Mounted Non-Dimming Sensor- OEMS1300P



Wireguard Kit- LED-HBHS-WG01-KIT

Additional Specification Information

- ¹ For actual lumens, see performance table
- ² "XX" is a character placeholder for the manufacturing configuration
- ³ Feature/accessory option is only available with **NDDX** driver type
- ⁴ Fixture with battery backup cannot be installed in an environment where the ambient temperature falls below 32°F
- ⁵ Actual performance may vary by up to ±10% of values listed; facility factors and fixture options can affect performance values. Values test results, and performance tables are based on an open area application at 277v
- ⁶ Weight will vary based on option selection
- ⁷ Requires the purchase of a Platform power cord. Cord is not included with fixture purchase
- ⁸ All Sensors come standard with a Raw Aluminum housing finish. Dark Gray and White housings are available. For Dark Gray add "-DG". For a White Housing add "-WH" at the end of the sensor part number
- ⁹ Feature/accessory option is only available with **FDDX** driver type
- ¹⁰ ML (Mate-N-Lock) or HW (Hardware) fixture option is not available with OEMS1 style sensors
- ¹¹ Brackets cannot be used with an end mounted sensor